

**District 13**  
City of Richmond

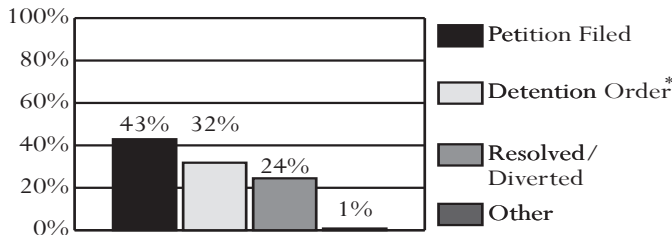
Region III -- Director: Stephanie C. Garrison

1600 Oliver Hill Way  
Richmond, Virginia 23219  
804-646-2901

**INTAKE COMPLAINTS, FY 2006-2008**

Domestic Relations	2006	2007	2008
Dom. Rel./Child Welfare	2,903	3,464	3,358
<b>Juvenile Complaints</b>			
Felony	974	1,096	1,085
Class 1 Misdemeanor	1,248	1,335	1,357
Class 2-4 Misdemeanor	207	183	224
CHINS/CHINSup (Status)	227	301	447
Other			
Technical Violations	304	253	202
Traffic	12	10	22
Other	14	37	31
<b>Total Juvenile Complaints</b>	<b>2,986</b>	<b>3,215</b>	<b>3,368</b>
<b>Total Complaints</b>	<b>5,889</b>	<b>6,679</b>	<b>6,726</b>

**INTAKE DISPOSITION OF JUVENILE COMPLAINTS, FY 2008<sup>1</sup>**



\* 100% of complaints disposed with a detention order also included a petition.  
<sup>1</sup> Previous Data Resource Guides include only successful diversions. FY 2008 data includes all diversions.

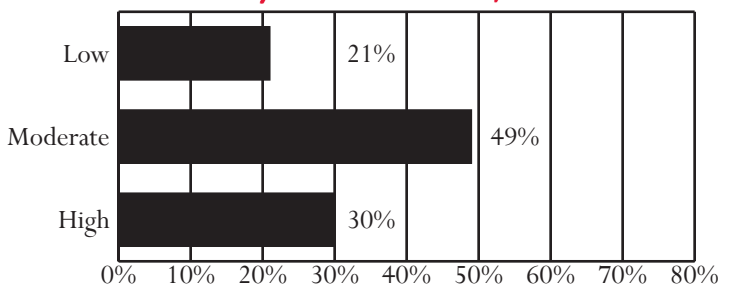
**JUVENILE INTAKE CASES, FY 2006-2008\***

Demographics	2006	2007	2008
<b>Race</b>			
Black	96.2%	94.7%	94.3%
White	3.1%	3.9%	4.7%
Other	0.7%	1.4%	1.0%
<b>Ethnicity - Hispanic</b>			
	0.5%	1.0%	0.9%
<b>Sex</b>			
Male	74.7%	74.6%	75.3%
Female	25.3%	25.5%	24.7%
<b>Age</b>			
8-12	5.7%	5.4%	3.6%
13	9.2%	8.1%	7.8%
14	14.5%	14.6%	12.6%
15	22.4%	21.0%	22.0%
16	22.1%	23.6%	28.1%
17	22.0%	23.3%	22.3%
18-20	3.2%	3.5%	3.0%
Error/Missing	0.8%	0.4%	0.8%
<b>Total Juvenile Cases</b>	<b>1,898</b>	<b>1,992</b>	<b>2,139</b>

\* Racial and Ethnic data may not be comparable to prior Data Resource Guides. See page 13 for a discussion of the methodological changes.

- **U.S. Census Data:**
  - Between calendar years 1990 and 2000, the juvenile population (ages 10-17) increased 12% (from 16,137 to 18,037). The juvenile population on July 1st, 2007 was 17,985.
- **Intakes (FY 2008):**
  - 2,139 juvenile intakes and 3,368 juvenile complaints (average of 1.6 complaints per intake)
- **Intake Trends (FY 2006-2008):**
  - Domestic relations complaints increased 16%.
  - Juvenile complaints increased 13%.
  - Juvenile felony complaints increased 11%.
  - CHINS/CHINSup complaints increased 97%.
- **Intake Disposition (FY 2008):**
  - A petition was filed in response to 75% of juvenile complaints. 24% of juvenile complaints were resolved or diverted.
- **Adjudication Time (FY 2008):**
  - The average time from intake to adjudication was 78 days.
- **Risk Assessment / YASI (FY 2008):**
  - 903 assessments completed; 30% had a high score, versus 19% statewide
- **Most Common Juvenile Offense Category (FY 2008):**
  - Intake - Assault
  - Probation - Assault
  - Pre-dispositional Detention - Assault
  - Commitment - Robbery
- **Average Length of Stay (FY 2008):**
  - Pre-dispositional Detention - 32 days, versus 26 statewide
  - Commitment to the State - 17.7 months, versus 14.4 statewide
- **Detention-Eligible Intake Cases (FY 2008):**
  - The 13th District had 1,682 detention-eligible intake cases and 715 pre-dispositional detention placements, for a rate of 2.4 eligible intakes per detention placement.

**RISK ASSESSMENT / YASI RESULTS, FY 2008\***



\* Data is not comparable to previous Data Resource Guides because some CSUs began using the YASI during FY 2008. Data presented combines the Risk Assessment Instrument and the YASI when applicable and includes YASI results of "no risk" in the "low risk" category.

Unless noted otherwise, these data do not include domestic relations or child welfare complaints. Percentages may not add to 100% due to rounding.

## OFFENSE CATEGORY, FY 2008

Offense Category (See Appendix I for the full list of Miscellaneous/Other Offenses)	Intake Complaints	New Probation Cases*	Pre-Disp. Detention Placements	Commit. to the State
<b>Domestic Relations/ Child Welfare Offenses</b>				
Custody	59.0%	0.0%	50.0%	0.0%
Desertion/Support	9.7%	0.0%	0.0%	0.0%
Spousal Abuse	21.0%	0.0%	0.0%	0.0%
Other DR/CW	10.2%	0.0%	50.0%	0.0%
<i>Total DR/CW Offenses</i>	3,358	0	2	0
<b>Juvenile Offenses</b>				
Abusive Language	1.0%	1.0%	0.8%	0.0%
Alcohol	0.7%	0.8%	0.0%	0.0%
Arson	0.7%	0.6%	0.6%	0.7%
Assault	18.7%	16.3%	17.5%	14.2%
Burglary	3.1%	5.6%	3.0%	0.7%
Contempt of Court	1.2%	1.0%	3.0%	0.7%
Disorderly Conduct	6.2%	4.7%	1.3%	0.0%
Escapes	1.0%	0.6%	2.0%	2.2%
Extortion	0.9%	0.8%	0.4%	0.0%
Failure to Appear	0.0%	0.2%	0.0%	0.0%
Family Offense	0.0%	0.0%	0.0%	0.0%
Fraud	1.4%	0.5%	1.0%	0.7%
Gangs	0.3%	0.3%	0.3%	0.7%
Kidnapping	0.4%	0.3%	0.6%	0.0%
Larceny	8.6%	12.2%	8.3%	3.0%
Miscellaneous/Other	6.7%	2.1%	1.7%	0.7%
Murder	0.7%	0.5%	0.9%	0.7%
Narcotics	8.1%	11.8%	14.5%	13.4%
Obscenity	0.4%	0.3%	0.0%	0.0%
Obstruction of Justice	2.9%	3.4%	2.7%	1.5%
Parole Violation	1.0%	0.0%	1.0%	7.5%
Probation Violation	3.9%	3.4%	4.4%	7.5%
Robbery	4.8%	3.2%	12.2%	32.8%
Sex Offense	0.5%	0.8%	0.6%	0.0%
Status Offense	8.3%	9.2%	2.1%	0.0%
Telephone Law	0.1%	0.0%	0.0%	0.0%
Traffic	3.4%	4.2%	2.9%	0.7%
Trespass	5.5%	5.5%	3.9%	0.0%
Vandalism	3.7%	3.9%	2.0%	0.0%
Weapons	5.9%	6.9%	12.3%	11.9%
<i>Total Juvenile Offenses</i>	3,368	621	1,448	134

\* Offense data for new probation cases is not comparable to previous *Data Resource Guides*. As of FY 2008, multiple offenses per probation case are recorded.

## CSU WORKLOAD INFORMATION, FY 2008

Completed Reports	Activity	ADP
Pre-dispositional Reports	54 Probation*	268
Post-dispositional Reports	199 Parole	42
Transfer Reports	7 Intensive Prob.	20
Custody Investigations	0 Commitments	91

\* Data may not be comparable to previous *Data Resource Guides* because workload codes 20, 21, and 22 are included for FY 2008.

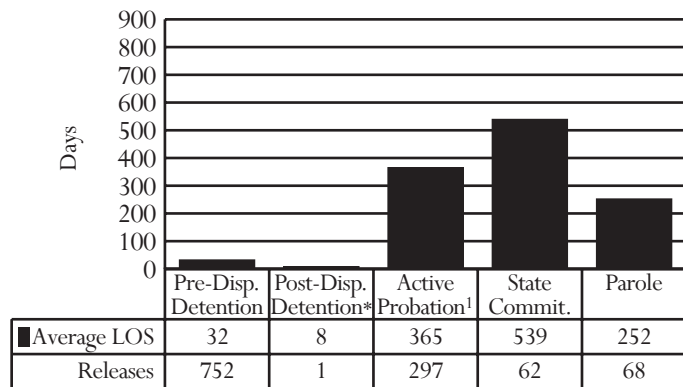
All data were downloaded on 11/13/2008. Any changes after that date are not reflected in this book. Percentages may not add to 100% due to rounding.

## OFFENSE SEVERITY, FY 2008\*

Offense Severity of the Most Serious Offense (See Appendix K for more info)	Juvenile Intake Cases	New Probation Cases <sup>1</sup>	Pre-Disp. Detention Placements	Commit. to the State
<b>Felonies:</b>				
- Against Persons	11.4%	17.8%	27.8%	52.5%
- Weapons/Narcotics	5.4%	12.2%	15.7%	23.0%
- Other	12.3%	22.4%	16.5%	4.9%
<b>Class 1 Misdemeanors:</b>				
- Against Persons	18.0%	14.3%	6.0%	4.9%
- Other	23.6%	18.5%	15.0%	4.9%
Prob./Parole Violation	7.5%	1.4%	10.9%	9.8%
Court Order Violation	1.6%	1.0%	4.8%	0.0%
Status Offense	15.8%	9.4%	3.1%	0.0%
Other	4.4%	2.8%	0.1%	0.0%
Information Missing	0.0%	0.0%	0.1%	0.0%
<i>Total Juvenile Cases/ Placements/Commitments</i>	2,139	286	715	61**
<i>% of Statewide</i>	3.46%	4.09%	6.71%	7.48%

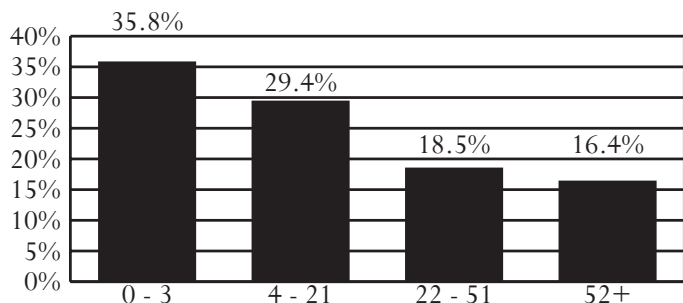
\* A single intake, probation, placement, or commitment may involve multiple offenses.  
\*\* 2% (1) of state commitments were associated with an institutional offense for which disposition was referred to this CSU.

## AVERAGE LOS, FY 2008 RELEASES



\* Post-dispositional detention with programs only (under Va. Code §16.1 - 284.1)

## PRE-DISPOSITIONAL DETENTION LOS DISTRIBUTION (DAYS), FY 2008 RELEASES\*



\* Selected intervals are consistent with applicable citations in the Code of Virginia.

<sup>1</sup> Probation data is not comparable to previous *Data Resource Guides* due to methodological changes.